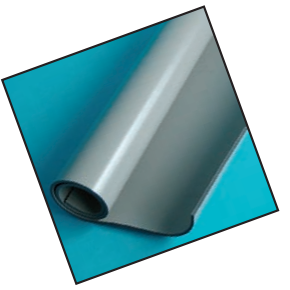




Veterinary X-RAYS Accessories



Total Imaging Solutions



Viewers



Flat Panel Viewers

Our range of ultra slim flat panel viewers measure only 39mm in depth. Offering modern styling with a uniform light distribution, they are available as single, double, three and four panel viewers.

Code	Description
AC1001	Single on/off flat panel viewer
AC1002	Double on/off flat panel viewer
AC1003	Three panel on/off flat panel viewer
AC1004	Four panel/off flat panel viewer
AC1005	Dimming facility, per panel



Viewers

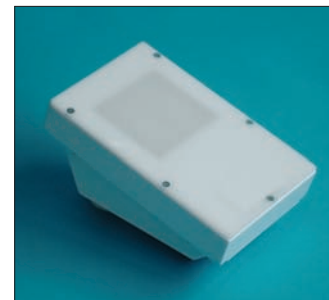
The Veterinary X-rays range of fully Perspex fronted x-ray viewers is made in England specifically for us. Finished in a brilliant white, both single and double viewers are available with either on/off switching or a dimming facility. Either is available with or without a built in high intensity spot and all have the option of being bench or wall mounted. All versions are CE marked

Code	Description
AC1006	Single on/off viewer
AC1007	Single viewer with dimmer
AC1008	Single on/off viewer with hi spot
AC1009	Single viewer with dimmer and hi spot
AC1010	Double on/off viewer
AC1011	Double viewer with dimmer
AC1012	Double on/off viewer with hi spot
AC1013	Double viewer with dimmer and hi spot

High Intensity Viewer

An ultra bright high intensity light for those darker corners! Giving a view area of 65x70mm and finished in a bright white. Manufactured in England to our specification. CE marked.

Code	Description
AC1014	High Intensity viewer



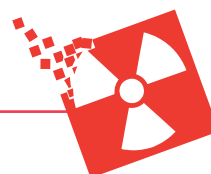
Dome Safelight

A new dome type safelight with a filter specifically for x-ray use. Suitable for green, blue and UV film type. Can be wall or bench mounted.

Code	Description
AC1015	Dome darkroom safelight complete



Cassettes and Screens



Snapshut cassette

Our own Snapshut cassette is available in all metric sizes, the most popular being 18x24cm, 24x30cm and 30x40cm. Manufactured in aluminium and with slide catches for ease of use and reliability, the Snapshut is a strong, lightweight cassette suitable for all veterinary work



Code	Description
AC1016	Snapshut cassette 18x24cm
AC1017	Snapshut cassette 24x30cm
AC1018	Snapshut cassette 30x40cm

Cawo screens

The Cawo Rapid screens held in stock are all blue emitting 200 speed calcium tungstate screens. 13x18cm 18x24cm, 24x30cm and 30x40cm sizes are all available. Sold in cassette pairs.



Code	Description
AC1033	Pr Cawo Rapid screens 13x18cm
AC1034	Pr Cawo Rapid screens 18x24cm
AC1035	Pr Cawo Rapid screens 24x30cm
AC1036	Pr Cawo Rapid screens 30x40cm

Flexible plastic cassettes

Following the demise of non screen film, the flexible cassette (fitted with screens) is set to take its' place. Essentially a plastic Velcro fastened envelope, the reusable cassette is available in 13x18cm and 18x24cm sizes.



Code	Description
AC1019	Flexible cassette 13x18cm
AC1020	Flexible cassette 18x24cm

Kyokko screen cleaner

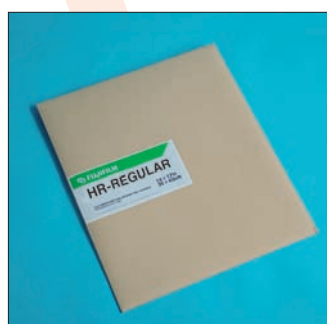
Anti static screen cleaner is suitable for cleaning all types of intensifying screen, green or blue, available in a 500ml bottle.



Code	Description
AC1037	Kyokko screen cleaner

Fuji screens

Fuji screens are all green emitting and range in speed from an HR fine (120 speed) for very fine detail through an HR regular (400 speed) for general use, to an HR fast (600 speed) where speed is of the essence. Sold in cassette pairs, and available in all standard metric sizes.



Code	Description
AC1021	Pr Fuji HR fine screens 13x18cm
AC1022	Pr Fuji HR fine screens 18x24cm
AC1023	Pr Fuji HR fine screens 24x30cm
AC1024	Pr Fuji HR fine screens 30x40cm
AC1025	Pr Fuji HR regular screens 13x18cm
AC1026	Pr Fuji HR regular screens 18x24cm
AC1027	Pr Fuji HR regular screens 24x30cm
AC1028	Pr Fuji HR regular screens 30x40cm
AC1029	Pr Fuji HR fast screens 13x18cm
AC1030	Pr Fuji HR fast screens 18x24cm
AC1031	Pr Fuji HR fast screens 24x30cm
AC1032	Pr Fuji HR fast screens 30x40cm

Marking and Storage



Film filing envelopes

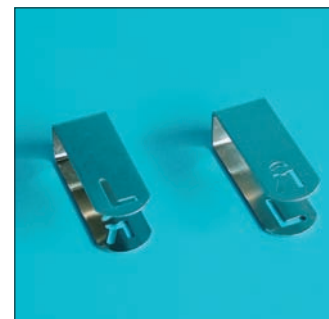
Brown manila film storage envelopes available in sizes 24x30cm and 35x43cm. Packed in boxes of 100, the envelopes are printed with the wording 'X-ray films' ideal for the neat storage and filing of x-ray film.



Code	Description
AC1038	Film storage envelopes 24x30cm box 100
AC1039	Film storage envelopes 35x43cm box 100
AC1040	Board backed envelopes 24x30cm box 100
AC1041	Board backed envelopes 35x43cm box 100

Left/right marker clip

Stainless steel L and R marker clip, clips over cassette to denote L or R on the exposed film.



Code	Description
AC1046	L/R marker clip

Cellumarks®

Specification

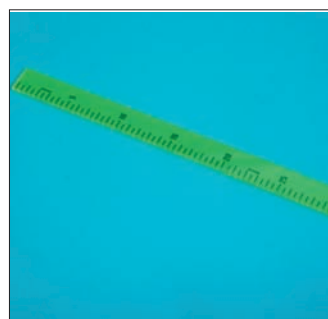
Engraved plastic tiles filled with a radiopaque filler. Any individual number or letter is available in either 5mm or 10mm letters. Custom legends are also available for practice name or area being x-rayed.



Code	Description
AC1042	Cellumark® 6mm or 13mm, per letter

Cellumark® ruler

Placed on the cassette at time of exposure, our Cellumark ruler allows absolute measurements to be made. Available in 15, 30 or 100cm lengths, all with 5mm graduations.



Code	Description
AC1043	Cellumark® ruler 15cm
AC1044	Cellumark® ruler 30cm
AC1045	Cellumark® ruler 100cm

X-rite marking tape

Probably the simplest film marking method. A 25ft roll of self adhesive radiopaque tape onto which you can write patient details. What could be simpler! Also available are personalised blockers with the practice details embossed, these are put behind the x-rite tape, and each time an exposure is made, the practice details are on each film.



Code	Description
AC1047	X-rite tape 25ft roll
AC1048	X-rite personalised blocker

Positioning



Standard foam shape set

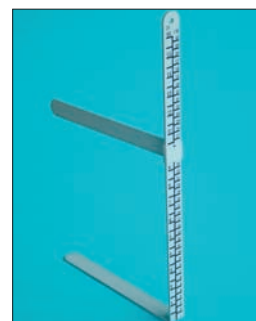
A set of nine foam shapes in a box! Ideal for positioning small animals. They are available either as foam finish, or covered in a washable nylon.



Code	Description
AC1049	Foam shape set
AC1050	Nylon covered foam shape set

Measuring caliper

Anodised aluminium measuring caliper for accurate measurement of body depth. Measuring 1 to 40cm in 1cm increments.



Code	Description
AC1056	Measuring caliper

Coated foam shape set

A set of five blue foam shapes, covered in a pvc skin. Washable, but not as hard wearing as the nylon covered shapes.



Code	Description
AC1051	Blue foam shape set

Redmark Cradles

The ubiquitous Redmark cradles, available as a set of three or individually. Perfect for an enormous variety of surgical and x-ray positioning needs.



Code	Description
AC1057	Redmark cradle set of 3
AC1058	Redmark cradle small
AC1059	Redmark cradle medium
AC1060	Redmark cradle large

Sandbag

As the sole agents for the English Sandbag Manufacturing Company, we probably supply the largest number of positioning sandbags in the UK.

We offer a bespoke service, or a complete sandbag set. The set comprises 6 sandbags, 2 each of the sizes 10x30cm, 24x30cm and 10x50cm. The bespoke sandbag can be made to any size you wish (within reason!) All sandbags are finished in washable nylon and are loosely filled; they are probably the easiest and most cost effective way of small animal positioning.

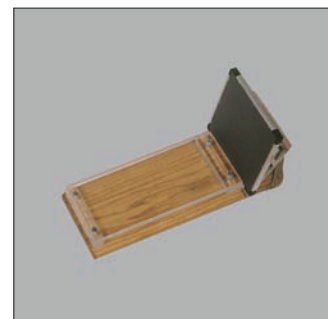
They are, of course, made in England.



Code	Description
AC1052	Sandbag set
AC1053	Bespoke sandbag up to 500sq cm
AC1054	Bespoke sandbag up to 1000sq cm
AC1055	Bespoke sandbag up to 1500sq cm

Equivet Equine Positioner

One of very few available equine positioners. This Plexiglas/wood block enables a variety of lower limb examinations to be made. Including Navicular (dv) Fetlock (ap and oblique) Pastern/Fetlock (lat) and 3rd Phalanx. The Equivet is a very versatile positioning aid, proving invaluable in the field.



Code	Description
AC1061	Equivet equine positioner

Protection



Protective Aprons

Our new range of protective clothing is made to our exclusive specification for veterinary use. Both double sided (front and back) and single sided (front only) aprons are now manufactured from new materials giving light weight, but excellent protection

Our double sided apron is a shoulder clip style, where the sides of the apron are held together with snap fasteners, and one of the shoulders has a slide clip fastening. Finished in royal blue wipe clean nylon, the double sided apron has padded shoulders for comfort, and is available in either 0.35 and 0.50mm lead equivalents

The single sided apron is held in place by two velcro closed cross over straps. So simple and light to use, it does away with all the weight issues of apron wearing. Finished in a royal blue wipe clean nylon, they are available in both 0.35 and 0.50mm lead equivalents.

Code	Description
AC1062	Double sided apron .35mm Pb
AC1063	Double sided apron .50mm Pb
AC1064	Single sided apron .35mm Pb
AC1065	Single sided apron .50mm Pb

Thyroid collar

A simple Velcro fastened shield that fits comfortably and simply around the neck, available only in 0.50mm lead equivalent.



Code	Description
AC1066	Thyroid shield 0.50mm Pb

Protective Gloves

Our moulded protective gloves are available in both 0.35mm Pb and 0.50mm Pb thickness. The fingers are curved to make them both more comfortable to wear and easier to use. Only available in pairs.



Code	Description
AC1067	Pair protective gloves .35mm Pb
AC1068	Pair protective gloves .50mm Pb

Protective Sleeves

Our protective sleeves fit over the forearm, allowing correct positioning to be attained with full, unhindered use of your hand. When positioned, the sleeve can be pulled down over your hand to allow maximum protection. Finished in burgundy coloured nylon, and available in 0.35 and 0.50mm lead equivalents. Available in pairs only.



Code	Description
AC1069	Pair protective sleeves 0.35mm Pb
AC1070	Pair protective sleeves 0.50mm Pb

Protective Mittens

Open palmed mittens, which allow maximum hand movement whilst affording maximum protection to the back of the hand. Available in 0.35mm and 0.50mm lead equivalents finished in burgundy nylon. Available in pairs only.



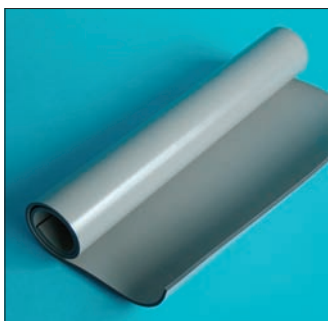
Code	Description
AC1071	Pair protective mittens 0.35mm Pb
AC1072	Pair protective mittens 0.50mm Pb

Protection



Protective vinyl sheeting

Lead vinyl sheeting available in 1mm lead equivalent. Has a multitude of shielding uses, the most popular being covering the top of your x-ray table. Roll width 600mm, can be cut to any length requested.



Code	Description
AC1073	Protective sheeting 1mm Pb

Lead glass

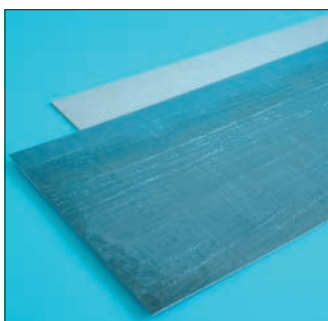
Lead glass with a lead equivalence of 2.00mm available in stock sizes, or to order in any size you would like. Particularly suited to the 'x-ray room in a greenhouse' scenario



Code	Description
AC1074	Lead glass 2.00mm, 120 x 150mm
AC1075	Lead glass 2.00mm, 240 x 300mm
AC1076	Lead glass 2.00mm, 400 x 700mm

Lead faced MDF

Suitable for a variety of shielding purposes. The mdf board of 1.2mm is bonded to 1.5mm of lead sheeting. Standard door sized sheets are available, as are custom sizes and shapes.



Code	Description
AC1077	Lead faced mdf 1800mm x 750mm

Mobile protective screen

A wheeled protective mobile screen with lead glass window. Finished in either a white or grey laminate, the screen measures 1800mm high and 750mm wide with the lead glass window being 250 x 300mm. The overall lead equivalence of the screen is 2.00mm Pb.



Code	Description
AC1078	Mobile protective screen 2.00mm Pb

Apron rail

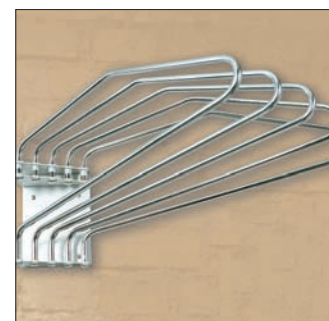
Simple wall mounted rail suitable for the safe storage of all types of protective apron. Supplied complete with all wall fixings, and finished in white



Code	Description
AC1079	Wall mounted apron rail

Apron Console

A wall mounted apron console capable of storing five double sided aprons neatly and safely against a wall.



Code	Description
AC1080	5 arm apron console

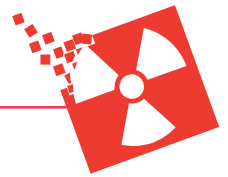
Apron hanger

Specially produced apron hanger to hold double sided protective aprons.



Code	Description
AC1081	Apron hanger

Protection



Warning signs

Warning signs with a variety of legends available in both self adhesive vinyl for inside use, or semi rigid pvc for outside use.

Self Adhesive Vinyl



Code AC1082



Code AC1083



Code AC1084



Code AC1085



Code AC1086



Code AC1087

Semi rigid PVC



Code AC1088



Code AC1089



Code AC1090



Code AC1091



Illuminated warning sign

Illuminated sign for use at each entrance to the x-ray room. Two part light with the legend 'Controlled area radiation' on the left and 'do not enter when red light is on' on the right.

Code	Description
AC1092	Illuminated warning sign

Description

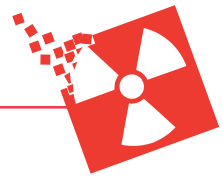
Self adhesive vinyl

Description	Size	Code
X-rays do not enter when light is on	300x250mm	AC1082
Danger x-rays do not enter when red light is on	300x450mm	AC1083
Danger, radiation controlled area, access restricted	300x450mm	AC1084
Radiation controlled area	150x115mm	AC1085
Radiation supervised area	150x115mm	AC1086
Danger Radiation risk	150x115mm	AC1087

Semi rigid pvc

Danger x-rays do not enter when red light is on	300x450mm	AC1088
Danger, radiation controlled area, access restricted	300x450mm	AC1089
Radiation supervised area	150x115mm	AC1090
Danger Radiation risk	150x115mm	AC1091

Film and Chemistry



Veterinary X-rays automatic chemistry

Our own label ready to use chemistry is so easy to use that it is our best selling chemistry. To use, all you have to do is break the seal and pour. No mixing, no mess, no fuss.



Code	Description
AC1093	Veterinary X-rays own label developer 2x5l
AC1094	Veterinary X-rays own label fixer 2x5l

Pro Clean Processor Cleaner

Our Pro Clean chemical processor cleaner brings your automatic processor baths up as clean as new. Packed in boxes of 4 1litre bottles, each making 5litres working strength solution.



Code	Description
AC1109	Pro Clean processor cleaner 4x5l

Fuji Hunt automatic chemistry

Ready to use automatic chemistry, packed in boxes of 2x5l. The Fuji Hunt automatic chemistry requires no mixing, just pour it in, turn the processor on, and you're ready to process.



Code	Description
AC1095	Fuji Hunt RTU developer 2 x 5l
AC1096	Fuji Hunt RTU fixer 2 x 5l

Anti Algae Treatment

Eliminates the problem of algae in the wash water of your processor by dosing the wash water. Available in 1 litre bottles



Code	Description
AC1110	Anti algae treatment 1 litre

FUJIFILM

As the veterinary agents for Fuji film in the UK for the past 20 years, we offer the complete range of x-ray and laser film from Fuji. All Fuji film is packed in boxes of 100 sheets. Popular sizes are held in stock for next day delivery.

Quick guide:

Fuji Super HRE or Super HRT film	Green sensitive
Fuji Super RX film	Blue sensitive
Fuji DIAT film	Laser imaging film

Code	Description
AC1097	Fuji film HRT/E 13x18cm
AC1098	Fuji film HRT/E 18x24cm
AC1099	Fuji film HRT/E 24x30cm
AC1100	Fuji film HRT/E 30x40cm
AC1101	Fuji film HRT/E 35x43cm
AC1102	Fuji film RX 13x18cm
AC1103	Fuji film RX 18x24cm
AC1104	Fuji film RX 24x30cm
AC1105	Fuji film RX 30x40cm
AC1106	Fuji film RX 35x43cm
AC1107	Fuji film DIAT 26x36cm
AC1108	Fuji film DIAT 35x43cm



Grids



CR Grids

High specification fine line CR specific grid available either focused or parallel in 18x24cm, 24x30cm or 35x43cm sizes. Can be use with our standard cassette locating frame to make use simpler and safer for the grid



Code	Description
AC1111	CR Specification grid, focused 18x24cm
AC1112	CR Specification grid, parallel 18x24cm
AC1113	CR Specification grid, focused 24x30cm
AC1114	CR Specification grid, parallel 24x30cm
AC1115	CR Specification grid, focused 35x43cm
AC1116	CR Specification grid, parallel 35x43cm

Cassette Locating Frame

Once fitted with a grid, this enables a grid to be snapped onto the front of a cassette enabling the grid and cassette to be used as a single unit. Comprises an angle metal frame with a Perspex grid cover fitted, springs locate the cassette.



Code	Description
AC1123	Cassette locating frame 18x24cm
AC1124	Cassette locating frame 24x30cm
AC1125	Cassette locating frame 30x40cm

Grids

Our aluminium interspaced secondary radiation grids are available in virtually all combinations of ratio, lines/cm, ffd and size. To make life simpler, we have chosen the most popular specification as our standard specification, that being an 8:1 ratio, 33 lines per cm and a ffd of 75cm.



For most veterinary applications a focused grid should be the choice, as the focal film distance is normally 75cm, where a parallel grid would produce a characteristic cut off on the resulting film, however a parallel grid is useful in situations where it is not easy to centre the x-ray beam on the centre of a focused grid.

All of our grids are manufactured in Europe for us and are CE marked.

Code	Description
AC1117	Focussed grid 8:1 33l/cm 18x24cm
AC1118	Focussed grid 8:1 33l/cm 24x30cm
AC1119	Focussed grid 8:1 33l/cm 30x40cm
AC1120	Parallel grid 8:1 33l/cm 18x24cm
AC1121	Parallel grid 8:1 33l/cm 24x30cm
AC1122	Parallel grid 8:1 33l/cm 30x40cm

Perspex grid protector

A Perspex grid encasement enabling a grid to be dropped on a regular basis without terminal damage being sustained to the grid, there would however be terminal damage to the cover on each occasion! All sizes available.



Code	Description
AC1126	Perspex grid cover 18x24cm
AC1127	Perspex grid cover 24x30cm
AC1128	Perspex grid cover 30x40cm

Automatic Processors



V90 desktop autoprocessor

The V90 will deliver a dry processed film in just ninety seconds. Compact and simple to use, the V90 will deliver consistent results time after time.



- ❑ Roller film transport system for optimal image quality
- ❑ Compact size to fit in the smallest darkroom
- ❑ Easy clean baths for simple maintenance
- ❑ Automatic chemical replenishment
- ❑ Accepts all film sizes including 35x43cm
- ❑ Automatic bath filling system
- ❑ Adjustable transit time. 90, 120 or 180 seconds
- ❑ Running wash water
- ❑ Electrical earth leakage breaker built in
- ❑ Power saving standby mode
- ❑ Optional floor stand

Specification

Film transport Continuous roller transport
Processing time 90, 120 or 180 seconds
Film size 13x18cm to 35x43cm
Processing capacity 75 sheets/hr 24x30cm
Bath capacities 3.9 litres (dev) 1.8 litres (fix) 1.4 litres (wash)
Replenishment Automatic, adjustable
Film detection Infrared sensor
Dimensions (w x l x h) 610 x 680 (*900) x 453 (* includes feed tray)
Electrical 220-240V AC single phase 6A
Weight 40kg
Other information CE marked

Code	Description
AC1129	V90 desktop autoprocessor
AC1130	Processor stand

Autopro 2 autoprocessor

The Autopro is our most compact and popular processor. Simple to both use and maintain, the Autopro 2 needs no plumbing, just a 13A socket. With the optional daylight attachment, it doesn't even need a darkroom.



- ❑ Roller film transport system for optimal image quality
- ❑ Compact size to fit in the smallest darkroom
- ❑ No plumbing needed at all
- ❑ Easy clean baths for simple maintenance
- ❑ Automatic chemical replenishment
- ❑ Accepts all film sizes including 35x43cm
- ❑ Power saving standby mode
- ❑ Optional floor stand
- ❑ Optional daylight attachment

Specification


Film transport Continuous roller transport
Processing time 180 seconds dry to dry (leading edge to leading edge)
Film compatibility 13x18cm to 35cmx43cm
Processing capacity 40 sheets/hour 24x30cm
Tank capacity 2 litres each (dev, fix, wash)
Replenishment Automatic replenishment pumps
Film detection Sensor at entrance
Dimensions (w x l x h) 565 x 708 x 450mm (*includes feed tray)
Electrical 220-240v 50/60Hz
Weight 30kg (dry)
Other information CE marked

Code	Description
AC1131	Autopro 2 autoprocessor
AC1132	Processor stand
AC1133	Daylight attachment





Mill End Road, High Wycombe, Bucks HP12 4JN England.

 01494 511 911

 01494 511 914

 office@veterinaryxrays.co.uk  www.veterinaryxrays.co.uk

copyright©Veterinary X-rays 2008.
Products and specification are subject to change without prior notice,
please call to confirm before placing an order E&OE

Total Imaging Solutions

